



OklahomaFilm.org -- 800.766.FILM

# OKLAHOMA FILM & MUSIC OFFICE

## A Division of the Oklahoma Tourism & Recreation Department

### OF&MO Staff

- Jill Simpson, Director
- Julie Porter, Deputy Director
- Abby Kurin, Development Coordinator
- Chris Kucharski, Locations Coordinator
- Yousef Kazemi, Administrative Assistant
- Interns
  - Cody McGuire



## **Mission of the Oklahoma Film & Music Office According to State Statute 74 OS 2236**

- Promoting the State of Oklahoma as a location for producing motion pictures, television programs, videos, and recording or performing music
- Assisting the motion picture, television, video and music industries by providing production contacts in the state, suggesting possible filming, performing, and recording locations, as well as other activities that may be required to promote the state as a filming and music center
- To the extent that resources are available, the office shall further assist the music industry by providing production contacts in the state, suggesting possible publishing, production and recording locations, and other activities that may be required to promote the state as a music center
- Developing a resource guide, database and Website
- Developing listings of film and music festivals and events in Oklahoma

## Additional Services We Also Provide

- Encourage development of a strong capital base for film and music in order to create infrastructure in Oklahoma
- Support and expand education initiatives for film and music at Oklahoma colleges, universities, and technical training centers
- Create a legislative agenda each year
- Administrate incentives programs
- Maintain up-to-date location photo archive
- Refine tools to reach industry
  - Reel-Scout
  - Reel-Crew
  - Oklahoma Music Database
- Monthly/Yearly reporting
- Production Company Relations and Community Relations: From pre-production to wrap, OF&MO is on stand by to help
- Issue weekly e-newsletter *This Week in Film & Music*
- Provide technical information to filmmakers, musicians, and companies engaged in production. This includes permits, location research and scouting, incentives and lodging just to name a few
- Maintain Oklahoma media list
- Outreach to state and civic leaders, as well as industry members
- Host annual Film & Music Reception
- Support local festivals

## Reel-Scout and Reel-Crew

OKLAHOMA FILM & MUSIC OFFICE

location search   Production Guide   Film Office Website   State Incentives   Other Incentives

Oklahoma has a rich inventory of photography covering the expansive diversity that can be found in our state. If you need more specific data about the locations you find here, please contact our office. Powered by Reel-Scout(TM), our library offers interactive mapping through Google and live weather data through The Weather Channel. It is updated regularly so please return often.

Search Locations   [search tips](#)

**Advanced Search**

category  
all

subcategory  
all

location name  location id#

region  county  city/town

within  of ZIP code

OKLAHOMA FILM & MUSIC OFFICE

location search   Production Guide   Film Office Website   State Incentives   Other Incentives

If you are a Crew Member in Oklahoma and want to register for the directory, please [REGISTER NOW!](#)

Returning Account Holders may log in to update and/or verify information.

**Login here to update your listing**

login ID

password

[Forgot your ID or password?](#)

Don't have a login account?  
Signing up is easy. [Register now.](#)

powered by **reelscout**

Oklahoma Film & Music Office  
Jill Simpson, Director  
Julie Porter, Deputy Director  
Abby Kurin, Development Coordinator  
Chris Kucharski, Locations Coordinator  
Jean Felix, Administrative Assistant  
120 N. Robinson Ave., Suite 600  
Oklahoma City, OK 73102

(405)230-8440 In-State • (800)766-3456 Toll-free • (405)230-8640 Fax

## History of the Rebate Program

### 2001-2004 Rebate Funding

•May 2001 15% rebate program initial seed money from legislature	\$150,000.00
•FY02 Legislative appropriation	\$ 44,000.00
•Assoc. of Central OK Govt. (ACOG) Funding (initial amount)	\$ 70,000.00
•Assoc. of Central OK Govt. (ACOG) Funding (final amount)	\$115,187.50
Total Amount Funded 2001-2004	\$379,187.50

### 2001-2004 Rebate Payouts

Four Films Totaling	\$379,187.50
---------------------	--------------

### 2004-2005 Rebate Fund Depleted

### New Program Introduced:

2005	15% rebate funded to \$5M per year with \$2M minimum spend
2006	\$2M budget minimum made cumulative for single company spend
2007	Minimum budget requirement lowered from \$2M to \$500,000
2008	Added additional 2% for use of Okla. music, music facilities, or musicians
2009	Rebate percentage increased to a base of 35% with minimum budget of \$50,000
Today	Six films, two television projects, and one commercial in rebate cue for FY10; Two films in the cue for FY11

## Oklahoma



## Incentives

### **The Oklahoma Film Enhancement Rebate**

- As of July 1, 2009, up to 37% on Oklahoma expenditures to qualifying companies filming in the state
- Capped at \$5 million per year
- The rebate is extended to film, television and commercial productions
- Company must have a minimum budget of \$50,000 and spend \$25,000 in Oklahoma
- The minimum budget requirement is cumulative

**The 35-37% rebate cannot be used in conjunction with the POP tax exemption**

### **Point of Purchase Tax Exemption**

- Qualified productions do not pay sales tax on goods and services in Oklahoma

### **Tax Credit for Oklahoma Film & Music Projects**

- Gives state taxpayers investing in film or music projects produced in Oklahoma a 25% income tax credit on profits made when those profits are reinvested in another film or music project produced in Oklahoma

### **Tax Credit for Construction of Oklahoma Film & Music Facilities**

- Tourism Development Act offers companies a construction tax credit of 10-25%. Minimum expenditures for a 10% credit lowered July 1, 2009 to \$100,000 for a music production facility and \$350,000 for a film production facility \$500,000 minimum remains for a 25% tax credit

## State-by-State Incentives Comparisons

Comparison of State Incentives Packages						
State	Direct Refund	State Tax Credit	Sales Tax Exemption	Other	Fiscal Impact	Is Rebate Money Taxable?
Oklahoma	<ul style="list-style-type: none"> <li>•Up to 37% Film Enhancement Rebate on Oklahoma expenditures to qualifying companies filming in the state</li> <li>•Capped at \$5 million per year</li> <li>•Minimum budget of \$50,000;</li> <li>•Minimum spend of \$25,000 in OK</li> </ul>	<ul style="list-style-type: none"> <li>•State Income Tax Credit for building production facilities in OK ranging from 10-25%</li> <li>•State taxpayers who invest in film/music projects produced in OK can receive a 25% income tax credit on profits made when those profits are reinvested in another film/music project produced in OK.</li> <li>•Credits are non-assignable and non-transferable.</li> </ul>	<ul style="list-style-type: none"> <li>•Point of Purchase Sales Tax Exemption to qualified productions for production related purchases</li> <li>•No minimum budget or expenditure requirement</li> <li>•Cannot be combined with 35-37% rebate.</li> </ul>	<ul style="list-style-type: none"> <li>•Hotel group rates available</li> </ul>	<ul style="list-style-type: none"> <li>\$20.8 Million (2008)</li> <li>\$17.4 Million (2007)</li> <li>\$18.9 Million (2006)</li> <li>\$11.2 Million (2005)</li> <li>\$6.2 Million (2004)</li> </ul>	Yes
New Mexico	<ul style="list-style-type: none"> <li>•25% Film Production Tax Rebate</li> <li>•50% reimbursement of wages of on-the-job training of NM residents in advanced BTL positions</li> <li>•No minimum spend; No per production cap</li> <li>•Actors' collective salaries up to \$20 Million will qualify for incentive</li> </ul>	n/a	<ul style="list-style-type: none"> <li>•Sales Tax Exemption Waiver</li> <li>•Cannot be combined with rebate</li> </ul>	<ul style="list-style-type: none"> <li>•Film Investment Loan Program offers a loan, with participation in lieu of interest, up to \$15 million per project, up to 100% of the budget for qualifying feature films or TV projects</li> <li>•Minimum budget of \$2 Million</li> <li>•85% of principal photography must be shot in NM</li> </ul>	<ul style="list-style-type: none"> <li>\$837 Million (2008)</li> <li>\$479.7 Million (2007)</li> <li>\$443.4 Million (2006)</li> <li>\$208.2 Million (2005)</li> <li>\$42 Million (2004)</li> </ul>	No
Louisiana	n/a	<ul style="list-style-type: none"> <li>•30% transferable credit</li> <li>•Tax credits are assignable and transferable</li> <li>•Additional 5% labor tax credit for in-state residents employed by production</li> <li>•No per production or statewide cap</li> <li>•Minimum of \$300,000</li> </ul>	n/a	n/a	<ul style="list-style-type: none"> <li>Est. \$500M (2007)</li> <li>\$341 Million (2006)</li> <li>\$249 Million (2005)</li> <li>\$144 Million (2004)</li> <li>\$80 Million (2003)</li> <li>\$3.5 Million (2002)</li> </ul>	n/a
Texas	n/a	<ul style="list-style-type: none"> <li>•5% to 30% of qualifying local spend (incentive increases when filming in underutilized areas)</li> <li>•No cap on incentive amount</li> <li>•Minimum \$250,000</li> <li>•60% of shooting days completed in Texas.</li> <li>•70% of paid crew must be Texas residents</li> </ul>	<ul style="list-style-type: none"> <li>•State, local occupancy taxes will be waived after the 30th day</li> <li>•Sales tax exemptions on qualified purchases; rentals or leases of equipment and machinery; and services performed during development</li> <li>•Refund for taxes paid on gasoline used in generators, boats, etc.</li> </ul>	n/a	<ul style="list-style-type: none"> <li>\$409.4 Million(2008)</li> <li>\$343 Million(2007)</li> </ul>	n/a

## State-by-State Incentives Comparisons

<b>New York</b>	n/a	<ul style="list-style-type: none"> <li>•30% refundable tax credit</li> <li>•Extra 5% if filming in New York City</li> <li>•Cap of \$350 million for 2009</li> <li>•Sunset in 2013</li> </ul>	<ul style="list-style-type: none"> <li>•Sales tax exemption for all production consumables and equipment rentals and purchases as well as related services</li> </ul>	n/a	Estimated \$2 billion (2009)	n/a
<b>Georgia</b>	n/a	<ul style="list-style-type: none"> <li>•Total possible tax credit= 30%</li> <li>•20% tax credit for productions with investments of \$500,000</li> <li>• 10% extra with Georgia logo included on projects</li> <li>•Can be carried forward for 5 years</li> <li>•No per project or total program caps</li> </ul>	<ul style="list-style-type: none"> <li>•Up to 8% on most below-the-line materials and service purchases or rentals.</li> </ul>	n/a	\$524 million(2008-09)	n/a
<b>Illinois</b>	n/a	<ul style="list-style-type: none"> <li>•30% of all qualified expenditures</li> <li>•15% tax credit on salaries of individuals that live in an economically disadvantaged area</li> <li>•Can be carried forward 5 years from when originally issued</li> <li>•No project/funding caps</li> <li>•Minimum spend of \$100,000 for project over 30 minutes, \$50,000 for project under 30 minutes</li> </ul>	n/a	n/a	\$155 million (2007)	n/a
<b>Connecticut</b>	n/a	<ul style="list-style-type: none"> <li>•Over \$1 million eligible for 30% tax credit</li> <li>•Between \$500,000 and \$1 million are eligible for a 15% credit</li> <li>•Production companies incurring production expenses or costs between \$100,000 and \$500,000 are eligible for a 10% credit</li> <li>•Minimum expenditure of \$1 million (effective Jan. 1, 2010)</li> <li>•Tax credit is assignable and may be carried for 3 years.</li> </ul>	n/a	<ul style="list-style-type: none"> <li>•Hotel Tax Exemption: 12% hotel occupancy tax only applies to the first 30 consecutive days</li> <li>•Sales Tax Exemption on certain materials, such as film stock and production &amp; sound equipment</li> </ul>	\$2.5 Billion in gross state product, including \$1.2 Billion in personal income (2005)	n/a
<b>Michigan</b>	n/a	<ul style="list-style-type: none"> <li>•40% refundable tax credit</li> <li>•Extra 2% if filming in one of the 103 core communities</li> <li>•\$2 million salary cap per employee per production</li> </ul>	n/a	<ul style="list-style-type: none"> <li>•25% infrastructure investment tax credit</li> </ul>	Est. \$93 million (2008)	n/a

## State-by-State Incentives Comparisons

North Carolina	n/a	<ul style="list-style-type: none"> <li>•25% tax credit( Effective Jan. 1, 2010)               <ul style="list-style-type: none"> <li>•Minimum spend of \$250K</li> </ul> </li> <li>•\$7.5 Million cap per project; •No overall cap on fund</li> <li>•Up to 25% Tax Credit for Qualified Business Ventures</li> </ul>	<ul style="list-style-type: none"> <li>•Special rate of 1% point of purchase sales tax</li> </ul>	<ul style="list-style-type: none"> <li>•Lodging tax is refunded for stays in excess of 90 days</li> <li>• No charge for state-owned property</li> </ul>	\$250 Million (2007) \$200 Million (2006)	Yes
South Carolina	<ul style="list-style-type: none"> <li>•20% Cash Rebate for all cast &amp; local crew, on salaries less than \$1 million</li> <li>•10% Cash Rebate on out-of-state employee wages, up to \$3500 per person</li> <li>•\$1 Million minimum spend</li> <li>•No per project cap</li> <li>•Out of state performing artists eligible for full 20% rebate</li> <li>•30% Cash Rebate on in-state supplier expenditures</li> </ul>	n/a	<ul style="list-style-type: none"> <li>•All productions spending over \$250K are exempt from the 5% sales tax and 7% lodging tax</li> </ul>	<ul style="list-style-type: none"> <li>•All film productions may use state properties location fee-free</li> </ul>	\$107 Million (2007) \$171.9 Million (2006) \$28.1 Million (2005) \$107 Million (2004)	No
Tennessee	<ul style="list-style-type: none"> <li>•Total possible refund of 36%</li> <li>•17% of local spend</li> <li>•Extra 15% for headquarters in state (via Dept. of Revenue)</li> <li>•Plus 2% more if 25% cast &amp; crew are TN residents</li> <li>•Plus 2% more if production spends \$20K for music created by TN residents or for recording in TN</li> <li>•Min. spend: \$500K for out of state; \$150K in-state</li> <li>•Capped at \$20 Million</li> <li>•Min. spend of \$1 Million</li> </ul>	n/a	n/a	<ul style="list-style-type: none"> <li>•Lodging Tax refunded after 30 days occupancy; waived from day 31 on</li> <li>•Sales tax not applied to rooms rented for 90+ days</li> <li>•State-owned buildings and land available free of charge</li> <li>•No state or local income taxes</li> <li>•Truck permits, fees, and fuel taxes waived except for overweight/oversized vehicles</li> </ul>	\$114.4 Million (2004)	No
Massachusetts	n/a	<ul style="list-style-type: none"> <li>•Transferable Income Tax Credit equal to 25% of total MA spending(inclusive of any salaries up to \$1M)</li> <li>•Must shoot 50% of film in-state or spend 50% of production budget in-state</li> <li>•\$50K minimum spend</li> <li>•No cap</li> <li>•Credit may be taken as a direct rebate at 90% of face value or may be sold at market rate</li> </ul>	<ul style="list-style-type: none"> <li>•Combinable Sales Tax Exemption to be used on any production related items purchased in state for a 12-month period</li> </ul>	n/a	\$452 million(2008) \$152 million(2007) \$72 million(2006)	n/a

## State-by-State Incentives Comparisons

<b>Rhode Island</b>	n/a	<ul style="list-style-type: none"> <li>25% Motion Picture Company Transferable Tax Credit for RI expenditures.</li> <li>•No per project cap</li> <li>•Minimum Spend: \$300K</li> <li>•51% must be filmed in state</li> </ul>	n/a	n/a	Est. \$90 Million (2006) Est. \$30 Million (2005)	n/a
<b>Pennsylvania</b>	n/a	<ul style="list-style-type: none"> <li>•25% Tax Credit</li> <li>•Requires 60% of budget spend in PA</li> <li>•Annual total funding cap of \$75 million</li> <li>•\$15 million cap for payments to ATL performing artists</li> <li>•Assignable and may be carried for 3 years</li> </ul>	n/a	<ul style="list-style-type: none"> <li>•Hotel Tax Exemption after 30 days</li> <li>•Free use of state owned property</li> </ul>	\$200 Million (2006) \$249 Million (2005) \$238 Million (2004)	n/a
<b>Missouri</b>	n/a	<ul style="list-style-type: none"> <li>•35% Missouri Film Production Tax Credit (minus a 2.5% issuance fee and exclusive of compensation over \$1 million to any individual)</li> <li>•No cap per project; funded at \$4.5 million/year</li> <li>•Each production company is limited to one qualified production per year.</li> <li>•Transferable up to 5 tax periods after issue</li> <li>•Minimum spend of \$50K for projects less than 30 minutes; \$100K if more than 30 minutes</li> </ul>	n/a	n/a	Est. \$3 Million (2007) Est. \$2.5 Million (2006)	n/a


## *The Killer Inside Me: Case Study*



## The Killer Inside Me: Case Study

### •Efforts to Recruit and Land Project

1



**THE KILLER INSIDE ME**  
Location Scout  
October 28, 2008-November 1, 2008

**OKLAHOMA FILM & MUSIC OFFICE**  
120 N. Robinson, Suite 100  
Oklahoma City, OK 73102  
(405) 230-8449 (Mo-Fr)

**Jill Simpson, Director** (405) 230-8441 (O)  
jill@oklahomafilm.org

**Julie Porter, Dep. Director** (405) 230-8446 (O)  
Julie@oklahomafilm.org

**Dino LaBil, Field Representative** (405) 230-8443 (O)  
dino@oklahomafilm.org

**Abby Kurin, Film Develop. Coord.** (405) 230-8442 (O)  
coord@oklahomafilm.org

**Patrick Chalfant**  
Tulsa Representative

**Chad Harris**  
Tulsa Representative

**Kay Wade**  
Curtis Representative

**Ted Fisher**  
Sapulpa Representative

**Mark Marshall**  
Enid Representative

**Melys Johnson**  
Geyson and Beaver Representative

**David Green**  
Oklahoma City Community College

2

Muse Team

Michael Winterbottom (Director)  
Chris Hanley (Producers)  
Mark Tildesley (Production Designer)  
Susan Kier (Line Producer)

Tulsa October 28

7:15P Meet Michael Winterbottom and Mark Tildesley at Will Rogers World Airport on AA Flight 1576.  
Julie will pick up Muse team Lower Level, just outside Baggage Claim (Film & Music Office Gray Towers)

7:30P Check into Colcord Hotel  
13 N. Robinson Ave.  
(405) 611-4300 (O)  
Primary Contact: Jeff Erwin, General Manager

Confirmation #s:  
• Michael Winterbottom- M7664  
• Mark Tildesley - M7667

Wed. October 29 -- OFFICE/SPACE SCOUT - Susan, Julie, Abby

8:45A Meet Susan Kier at Will Rogers World Airport on Southwest Flight 955  
Julie will pick up Susan Lower Level, just outside Baggage Claim (Film & Music Office Gray Towers)

9:30A - 12:00P Arrive in Edmond to view three office and three hotel options

12:00P - 12:45P Travel to Guthrie/Lunch

12:45P - 2:00P Arrive in Guthrie to view two office options

2:00P - 3:15P Julie and Susan view two hotel options in Guthrie

3:15P - 3:30P Susan join Michael and Mark in Guthrie

3

Wed. October 29 -- GUTHRIE LOCATIONS - Michael, Mark, Jill

Summary: 7:50A, Sunset: 6:30P  
Weather: Sunny, high of 72, low of 41

8A Jill picks up MW and MT at Colcord

8:30A Pick up Kay Wade at Chamber/Economic Development to scout Guthrie locations:

Masonic Temple  
Tim Horton, (405) 282-1281 (O)  
*\*If we elect to use Masonic Temple, we need to be finished there before 2:30P*

Main street area, all interiors seen previously, including:

Train depot  
Newspaper office  
Sheriff's Office and Jail  
Sheriff Randy Richardson, (405) 641-6641 (C)  
*\*Please call Sheriff Johnson on your way*

Empty Courthouse (Above Post Office)  
Lawrence Pat, (405) 282-4736  
*\*Proceed to front counter, let them know you are there and they can let you in.*

Diner  
Neighborhood houses (interior and exterior)  
*\*Easy to securing all of these houses and can get access to interiors*

Thurs. October 30 -- OCC SOUND STAGE, CAPITOL HILL/INDEPENDENCE

8A Muse Team meet with potential crew members at Colcord- these appointments scheduled by Susan.

10:00A Jill meet Muse Team at Colcord

10:15A Oklahoma City Community College Soundstage  
7777 South May Avenue  
Oklahoma City, OK 73159  
Contact: David Greene  
(405) 682-1611, ext. 7793  
(405) 496-8384 (Cell)

11:00A Sherrif's Diner

4

7:04 SW 59th Street  
Oklahoma City, OK 73109  
(405) 634-4796

11:15A Stockyards/Cattlemen's

11:30A Capital Hill Neighborhood and Dealerships  
Intersection of SW 26th St. and S. Robinson Ave  
Scott Capitol Hill residences

12P Lunch Box for lunch  
413 West Sheridan Avenue  
Oklahoma City, OK 73102  
Owner: Ed Strawn  
(405) 232-9489

12:40P Santa Fe Train Depot  
50 N. E. K. Gaylord Blvd  
Oklahoma City, OK 73102  
(405) 236-4143

12:45P Automobile Alley

12:50P Kaiser's at Grateful Bean Cafe (11 a.m. - 6 p.m.)  
1009 North Walker Avenue  
Oklahoma City, OK 73102  
Owner: Peter Schaffer  
(405) 236-5933

12:55P View other Oklahoma City Neighborhoods and Houses  
Crestwood/Linwood/Gatewood/Plaza District  
NW 16722/Pleasant May  
15<sup>th</sup> 167<sup>th</sup> Street  
6905 Stock of 14<sup>th</sup> 16<sup>th</sup>  
(Jeff Erwin 18<sup>th</sup> & Hudson)

1:30P Muse team departs for Sapulpa

3:00P Scout Sapulpa with Ted Fisher  
1950's era diners/cafes  
neighborhoods with 1920's/30's era large two story frame houses  
1950's era auto garage/filling stations  
Courthouse

3:54P Meet Chris Hanley at Will Rogers World Airport on United Flight 642

Dino will pick up Chris Lower Level, just outside Baggage Claim (Film & Music Office Gray Towers)

4:20P Depart Sapulpa for Tulsa

5

4:30P Scout Tulsa with Jill Simpson, Patrick Chalfant meet team in Tulsa  
Downtown  
Mayo Hotel  
1950's era diners/cafes  
neighborhoods with 1920's/30's era large two story frame houses  
1950's era auto garage/filling stations

6:00P Return to OKC

Fri. October 31 -- INTERVIEW COMMON LOCATIONS

8:00A Colcord Shuttle takes Susan to Airport for Rental Vehicle  
*\*Confirmed with Jonathan at Muse and Susan Kier (5:54P)*

9:30A Julie picks up Mark and Michael at Colcord for Sherman Ironworks  
Building meeting

9:45A Sherman Ironworks Building  
Check Amworth  
(405) 640-9303 (C)

10:00A Muse Team Departs for Enid in their rental

11:15A Scout Enid with Mark Marshall  
Meet in front of the Courthouse  
114 W. Broadway

12P Depart Enid for Western Oklahoma, scouting along the way

Saturday, November 1 -- BEAVER, GUTHRIE

Summary: 7:52A, Sunset: 6:35P  
Weather: Partly cloudy, high of 71, low of 48  
*\*Please note: Doublet sunrise time ends on Sunday, November 2 at 2:00A. Sunrise will be one hour earlier; sunset will be one hour earlier.*

8A Scout Beaver and Geyson with Melys Johnson, mainly looking for exteriors  
and Joyce's house

10A Muse team departs Oklahoma via rental

## *The Killer Inside Me: Case Study*

- **Money Spent in Oklahoma and Fiscal Impact:**
  - Start Date in Oklahoma 5/18/09
  - End Date 7/1/09
  - Total Number of shooting days in Oklahoma 29 + 1 insurance day
  - Total Number of pre and post production days 66
  
  - Number of Oklahomans employed
    - Technical/Labor/Crew 71
    - Police/Fire/Security 6
    - Extras 584
  - Oklahoma Goods and Services
    - Hotel Room Nights 2899 \$256,471
    - Location Fees \$ 98,149
    - Equipment Rentals/Purchases \$ 153,531
    - Office Rental/Purchases \$ 62,559
    - Contracted Services \$ 39,543
    - Catering \$ 32,761
    - Production Design \$166,456
    - Travel/Per Diem \$263,806
    - Transportation \$128,072
    - Misc. Expenses/Utilities/Rentals \$364,160
  - Other Qualifying Spend
    - 25% of total ATL – OK registered companies \$748,910
  - Oklahoma Locations Utilized
    - Guthrie 6
    - Oklahoma City 6
    - Tulsa 5
    - Cordell 3
    - Enid 3

**Total Oklahoma Locations** 23

## *The Killer Inside Me: Case Study*

- Average Direct Cost for One Day of Location Filming in Oklahoma for *The Killer Inside Me*: \$ 54,758
- Economic Impact (1.72 Multiplier): \$ 94,184
  
- Direct Dollars Spent in Oklahoma: \$2,995,641
- Economic Impact (1.72 Multiplier): \$5,152,503
  
- Estimated 15% Rebate Payout: \$ 449,346
- Projected Payroll Tax Paid in Oklahoma \$ -171,997
- Projected Sales Tax Paid in Oklahoma \$ -114,402
- Projected Corporate Taxes \$ -71,829
- Projected State Tax on Rebate (4.5%) \$ -20,220
- Projected Total Taxes Paid in Oklahoma \$ -378,449
  
- Projected Net Rebate Payout (1.6%) \$ 70,897

## *The Killer Inside Me:* Oklahoma in the Media Spotlight

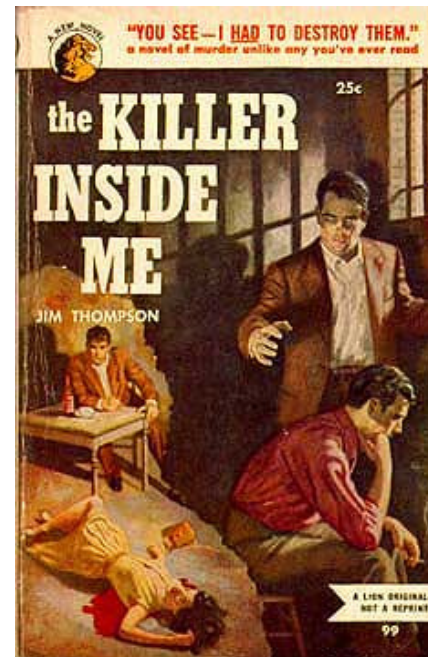
- National coverage in response to June 13, 2009 Media Day on downtown Oklahoma City set:
- Associated Press article “Film Turns Downtown Oklahoma City into 1950’s Texas” picked up by over 60 media outlets nationwide:
  - Forbes.com
  - The New York Times.com
  - MSN.com
  - CBS.com
  - The Insider.com
  - BusinessWeek.com
  - KSWOTV.com Lawton/Wichita Falls
  - Newsstar.com Shawnee
  - News9.com – Oklahoma City
  - TulsaWorld.com
  - Fox 25 Oklahoma City
  - TheWashingtonPost.com
  - Toronto Sun.com
  - DallasNews.com
  - TheDailyHerald-HeraldExtra.com-Utah Valley
  - Seattletimes.com
  - SeattlePI.com
  - KOB.com-Albuquerque (NBC News Affiliate)
  - Timesleader.com-Northeastern Pennsylvania
  - Boston.com
  - Yahooonews.com
  - Entertainmentdaily.com
- Dallas Morning News article, “Oklahoma Film Shoot a Victory for Indie Movie’s Producers, State Officials”
- Wisconsin-based FilmingLocations.com interview with OF&MO staff in “Oklahoma Putting Itself on Film Industry Map”



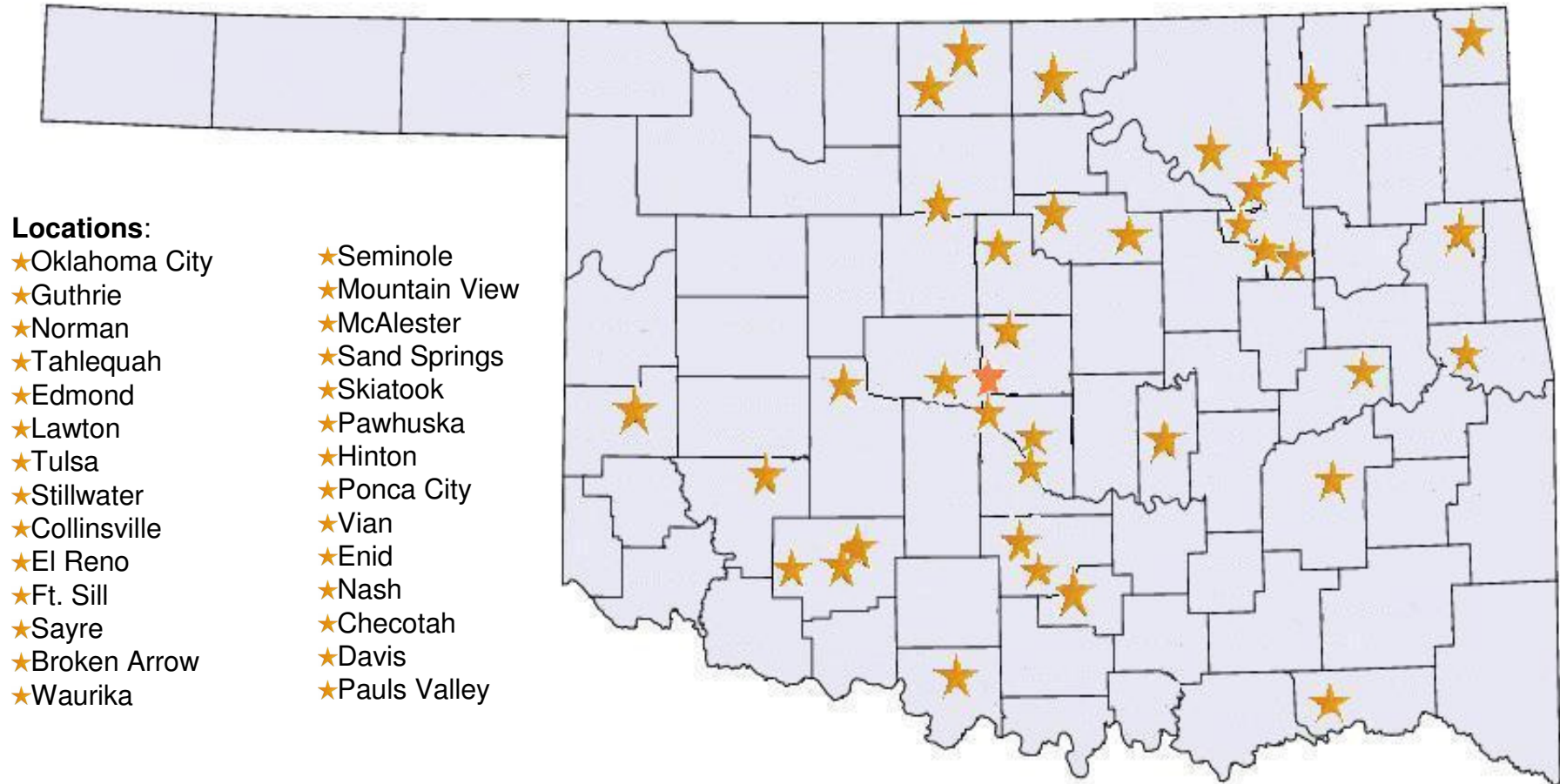
## Oklahoma Film Enhancement Rebate Applications

Pending as of November 13, 2009

FISC YR	TITLE	EST. OK SPEND	PCTG	EST. PAYOUT	PREQUAL LETTER SENT
FY09	<i>PEARL</i>	\$ 572,006	15%	\$ 85,801	9/08
FY09	<i>THE KILLER INSIDE ME</i>	\$2,995,641	15%	\$449,346	5/09
<b>EST. TOTAL FY09</b>				<b>*\$535,147</b>	
<b>UNUSED FY09 BALANCE</b>				<b>\$4,464,853</b>	



## Hollywood in Oklahoma- Film Locations



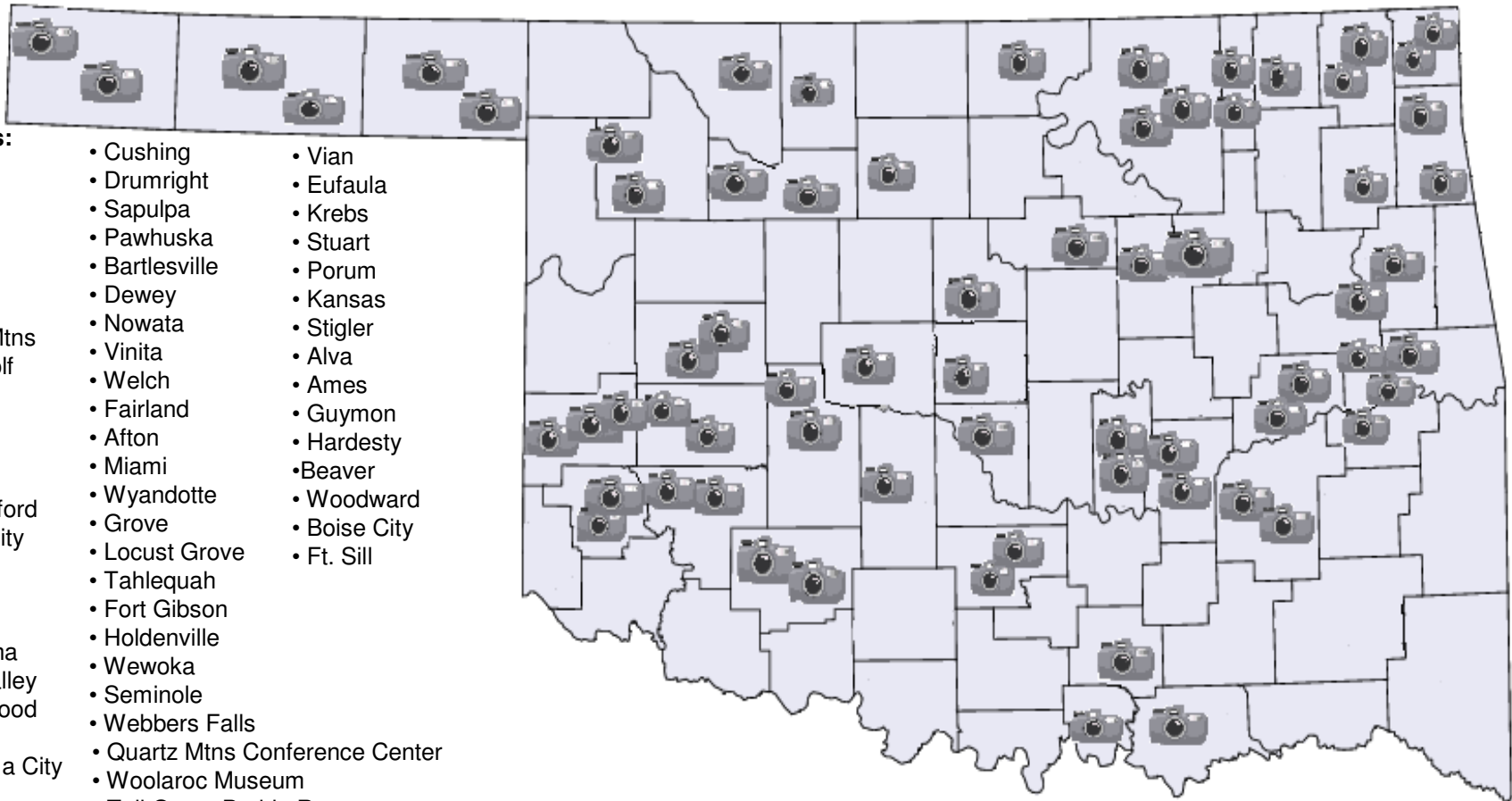
## Filmed in Oklahoma

- **Killer Inside Me** - 2009, Guthrie, Oklahoma City, Tulsa, Cordell, Enid
- **Barking Water** - 2008, Ponca City, White Eagle, Holdenville, Wewoka, Pawhuska
- **Pearl** - 2008, Oklahoma City
- **Ivory** - 2007, Norman, Guthrie
- **Four Sheets to the Wind** - 2006, Tulsa, Seminole
- **Saving Grace** - Fox/TNT - 2006, Oklahoma City
- **Rainbow Around the Sun** - 2006, Guthrie, Oklahoma City
- **The Fun Park** - 2006, Mountain View
- **Fingerprints** - 2006, Guthrie, Oklahoma City
- **The Gray Man** - 2005, Guthrie, Oklahoma City
- **Surveillance** - 2005, Oklahoma City, Tulsa
- **The Hunt** - 2005, Guthrie, Norman
- **Rune** - 2005, Oklahoma City
- **Billy Fail** - 2005, Tulsa, Tahlequah
- **Soul's Midnight** - 2005, Oklahoma City
- **Elizabethtown** - 2004, Oklahoma City, El Reno
- **Return to Sender** - 2004, Tulsa, McAlester
- **American Indian Graffiti: This Thing Called Life** - 2003, Oklahoma City, Norman
- **Comic Day** - 2003, Oklahoma City
- **Making Arrangements** - 2003, Oklahoma City
- **Sam and Janet** - 2003, Oklahoma City, Edmond
- **Cockfight** - 2001, Sand Springs, Tulsa
- **The Doe Boy** - 2001, Tahlequah
- **Party Crasher** - 2000, Tulsa
- **Chillicothe** - 1999, Tulsa
- **Another Day in Paradise** - 1998, Tulsa
- **Possums** - 1998, Nowata
- **Eye of God** - 1997, Skiatook, Collinsville
- **Keys to Tulsa** - 1997, Tulsa
- **Simple Wish, A** - 1997, Pawhuska
- **You Bet Your Life** - 1997, Norman, Purcell
- **Phenomenon** - 1996, Tulsa
- **Public Enemies** - 1996, Guthrie
- **Twister** - 1996, Waurika, Wakita, Ponca City, Pauls Valley, Norman, Maysville, Guthrie
- **Raw Target** - 1995, Tulsa
- **Barrow Gang, The** - 1995, Commerce
- **In the Army Now** - 1994, Ft. Sill
- **Caged Fear** - 1992, McAlester
- **My Heroes Have Always Been Cowboys** - 1991, Guthrie, Oklahoma City
- **The Bounty Hunter** - 1989, Sand Springs
- **Dark Before Dawn** - 1989, Edmond, Oklahoma City
- **Offerings** - 1989, Oklahoma City
- **UHF** - 1989, Tulsa
- **Rain Man** - 1988, El Reno, Guthrie, Oklahoma City, Hinton
- **Near Dark** - 1987
- **Terror at Tenkiller** - 1986
- **Fandango** - 1985, Tulsa
- **The Outsiders** - 1983, Tulsa
- **Rumble Fish** - 1983, Tulsa
- **Tex** - 1982, Bixby, Broken Arrow, Tulsa
- **Fast Charlie...The Moonbeam Rider** - 1979
- **Alien Zone** - 1978, Ponca City, Stillwater, Yale
- **Where the Red Fern Grows** - 1974, Tahlequah, Vian
- **Dillinger** - 1973, Enid, Nash, Oklahoma City
- **J.W. Coop** - 1972, McAlester
- **Only Way Home** - 1972
- **This Stuff'll Kill Ya** - 1971, Checotah, Oklahoma City
- **Two Lane Blacktop** - 1971, Boswell
- **State Fair** - 1962, Oklahoma City
- **Stark Fear** - 1961, Lexington, Norman, Oklahoma City
- **Around the World in Eighty Days** - 1956, Lawton
- **Lawton Story** - 1951, Lawton
- **Tulsa** - 1941, Tulsa
- **Home in Oklahoma** - 1946, Davis
- **Grapes of Wrath** - 1940, Sayre, McAlester
- **Union Pacific** - 1939, Cache
- **Wild West** - 1925, Ponca City

## Scouting Locations for Potential Projects 2008-2009

### Locations:

- Texola
- Erick
- Sayre
- Elk City
- Canute
- Mangum
- Quartz Mtns
- Lone Wolf
- Granite
- Hobart
- Cordell
- Clinton
- Weatherford
- Custer City
- Hydro
- Calumet
- Hinton
- Chickasha
- Pauls Valley
- Wynnewood
- Norman
- Oklahoma City
- Guthrie
- Enid
- Ponca City
- Durant
- Kingston
- Tishomingo
- Stroud
- Lawton
- Cushing
- Drumright
- Sapulpa
- Pawhuska
- Bartlesville
- Dewey
- Nowata
- Vinita
- Welch
- Fairland
- Afton
- Miami
- Wyandotte
- Grove
- Locust Grove
- Tahlequah
- Fort Gibson
- Holdenville
- Wewoka
- Seminole
- Webbers Falls
- Quartz Mtns Conference Center
- Woolaroc Museum
- Tall Grass Prairie Reserve
- Great Salt Plains State Park
- Wichita Mtns Wildlife Refuge
- Glass Mountains
- Fort Supply
- Beaver Dunes State Park
- Black Mesa State Park
- Vian
- Eufaula
- Krebs
- Stuart
- Porum
- Kansas
- Stigler
- Alva
- Ames
- Guymon
- Hardesty
- Beaver
- Woodward
- Boise City
- Ft. Sill



## FY05-FY09 Economic Impact

### FY 2005 Totals:

\$6.5M in direct dollars  
**\$11M in impact**

### FY 2006

Feature Films: 8  
 Reality Shows: 1  
 Television Programs: 23  
 Docs/Industrials: 186  
 Commercials: 554

### FY 2006 Totals:

772 productions  
 \$11M in direct dollars  
**\$18.92M in impact**

### FY 2007

Feature Films: 8  
 Reality Shows: 1  
 Television Programs: 21  
 Docs/Industrials: 191  
 Commercials: 302

### FY 2007 Totals:

523 productions  
 \$10.1M in direct dollars  
**\$17.4M in impact**

### FY 2008

Feature Films: 7  
 Reality Shows: 2  
 Television Programs: 15  
 Docs/Industrials: 124  
 Commercials: 231

### FY 2008 Totals:

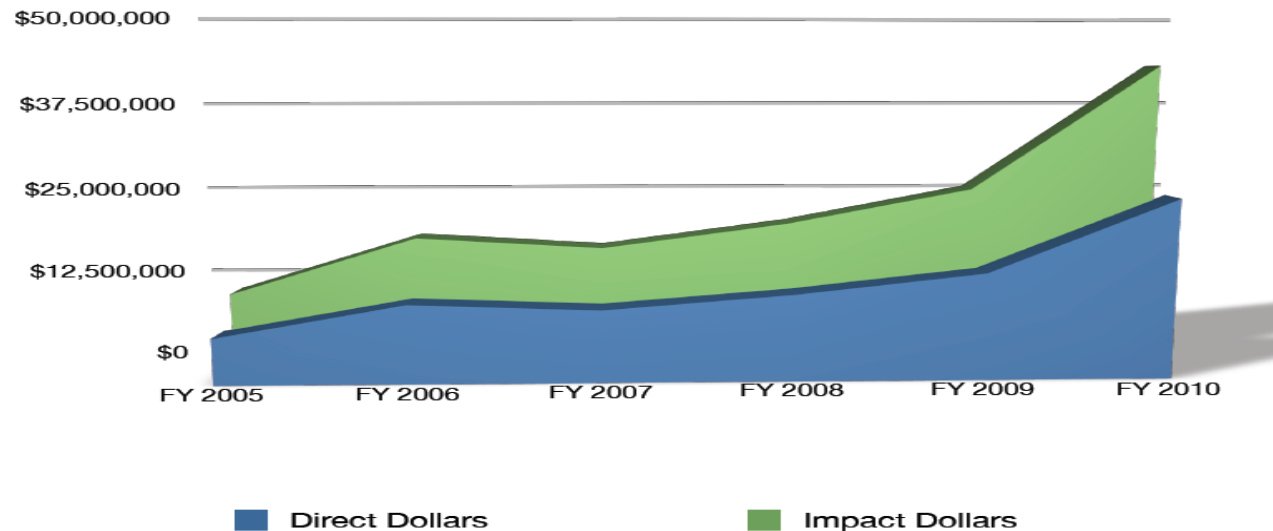
379 productions  
 \$11.3M in direct dollars  
**\$19.4M in impact**

### FY 2009

Feature Films: 10  
 Reality Shows: 566  
 Television Programs: 35  
 Docs/Industrials: 9  
 Commercials: 969

### FY 2009 Totals:

1,589 productions  
 \$14.9M in direct dollars  
**\$25.6M in impact**



**\*Proj. FY 2010:**  
 \$25M in direct dollars  
**\$43M in impact**

## Current and Potential Facilities

**New Jobs, New Tax Dollars for Oklahoma**



## Current Sound Stages in Oklahoma

### Oklahoma City

- **Oklahoma City Community College:**
  - 6,000 sq. ft. sound proofed stage, dressing rooms, 26 station avid editing suites



### Tulsa

- **KWHB/LeSea Productions:**
  - 6,000 sq. ft. stage sound proofed stage, dressing rooms
- **Little Mountain Productions:**
  - 10,000 sq. ft. stage
- **University Broadcasting, Inc.** (Located at Oral Roberts University Mabee Center):
  - Two stages: 9828 and 2000 sq. ft.



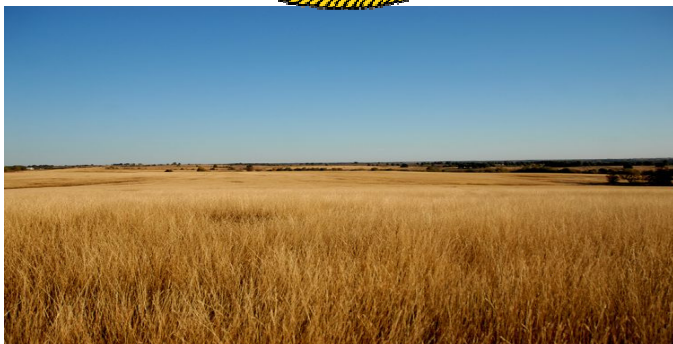
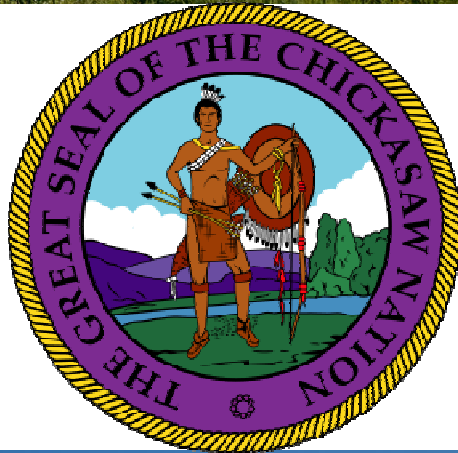
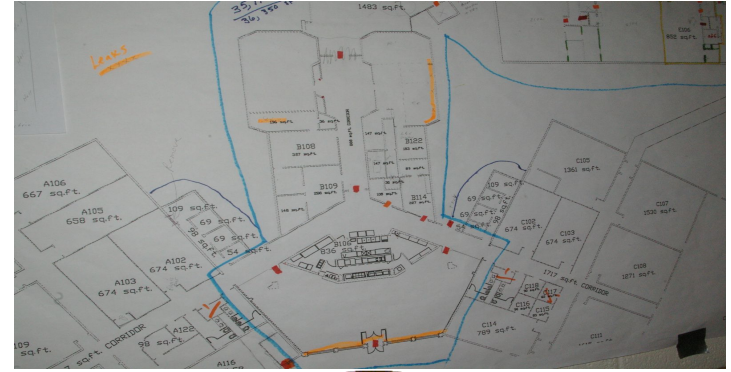
### Broken Arrow

- **Retrospec Films:**
  - 10,000 sq. ft. stage



# OKLAHOMA FILM & MUSIC OFFICE

## Possibilities for the Future



## Albuquerque Studios Model



CONCIERGE SERVICE STUDIO RESTAURANTS



### Complete Production Services

Studio Concierge provides our productions with local knowledge, lowest rates possible, and reliable services. Our services are at no cost to the production. Allow us to save your production valuable time and money on all of the services you need:

- Short & Long Term Housing
- Hotel Reservations
- Air Travel (Private & Commercial)
- Rental Cars
- Car Services
- Catering
- Massage
- Yoga/Pilates
- Restaurant reservations
- Dry Cleaning & Laundry Pick Up
- Cell Phones
- Nanny/Babysitting Services
- Child equipment rentals
- Wrap/Kick Off Parties
- Location Services
- Entertainment
- Spa Services
- Personal Shoppers
- Production gifts and gift baskets
- Personal Trainers/Gym Memberships
- Housekeeping Services
- Security/Personal Drivers

studio  
services

## Removing the Cap: What Could Be in Our Future

- Since Governor Richardson took office in 2003, over 120 major feature films and television series have shot in New Mexico, adding over \$2.5 billion dollars to the state's economy
- Albuquerque Studios has generated approximately 2800 jobs just for films shot on the lot. This does not include the many films shot on location or in warehouses in New Mexico

The screenshot displays the Albuquerque Studios website. At the top, there is a large image of the studio building with the text 'ALBUQUERQUE STUDIOS' overlaid. Below this is a navigation bar with links: SOUND STAGES, OFFICE SPACE, PRODUCTION SUPPORT, STUDIO SERVICES, VIRTUAL TOUR, and FILMING IN NEW MEXICO. Underneath the navigation bar is another row of links: LOCATION PACKAGES, LIGHTING & GRIP, CREW REFERRALS, and ONSITE SERVICES. The main content area is divided into two columns. The left column is titled 'onsite services' and contains a grid of logos for various vendors: New Mexico Lighting & Grip Company (A Subsidiary of NBC Universal), CLAIRMONT CAMERA FILM & DIGITAL, ABSOLUT VIDEO, Studio Air, CONCIERGE, xerox, THE HOME DEPOT, 1st Call STUDIO EQUIPMENT, ROCK BOTTOM RENTALS, STAR WAGGONS, FOTO KEM, sandia Media, and EP Entertainment Partners (an employee-owned company). The right column shows a photograph of the interior of a large studio space. At the bottom of the page, there is a footer with navigation links (HOME | ABOUT US | CONTACT US |), the address (Albuquerque Studios, 5650 University Blvd SE, Albuquerque, NM 87106), phone number ((505) 227-2000), and email (info@abqstudios.com).

## What's Still Needed?

### Crew Base and Training

- Higher Education Incentives
- Career Tech Partnerships
- On the job training and apprenticeships



## What's Still Needed?

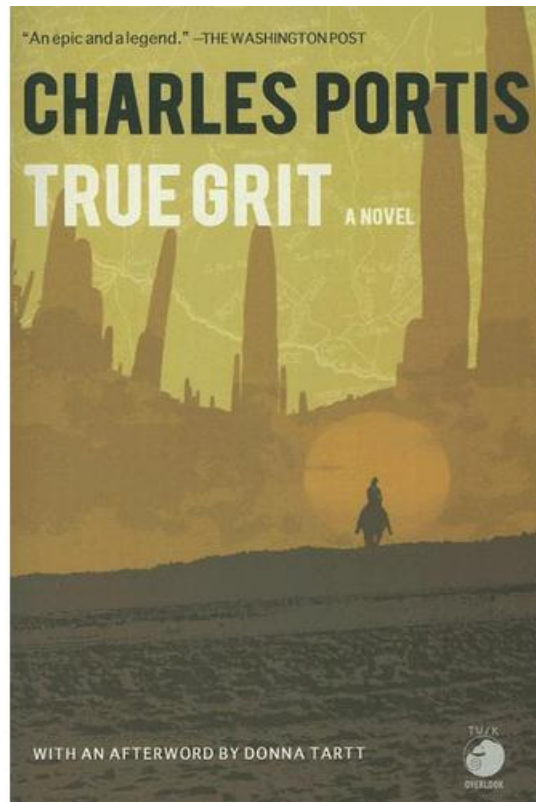
- Increased Infrastructure
  - Facilities
  - Equipment Houses
  - Support Service Companies



## What's Still Needed?

### Greater Pot of Rebate Money

- Replenishment Mechanism



OKLAHOMA

FILM & MUSIC OFFICE



## What's Still Needed?

### Oklahoma Film & Music Office Expansion

- Increased Staffing
- Increased Funding



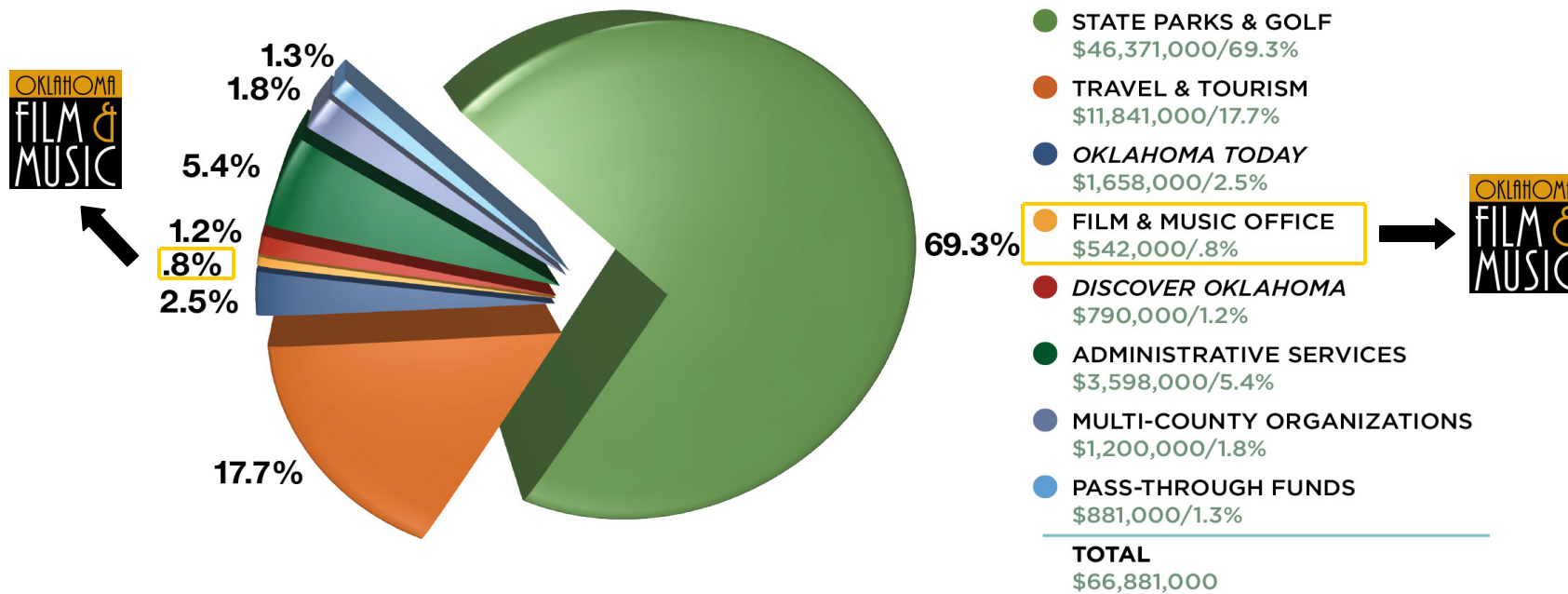
OKLAHOMA  
COMMERCE



OklahomaFilm.org -- 800.766.FILM

## OF&MO Budget 2009

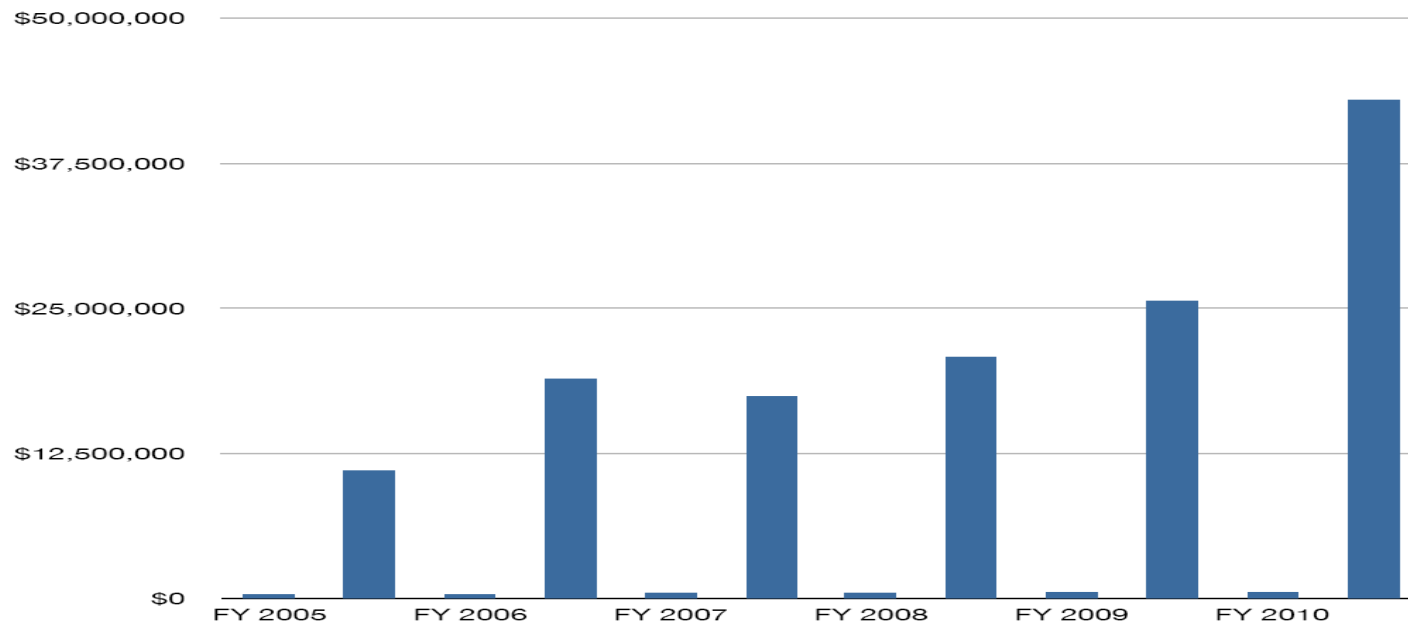
### Tourism & Recreation Budget FY09\*



\*Does not include capital maintenance funding.

## OF&MO Budget vs. Production Economic Impact

<u>FY</u>	<u>OF&amp;MO Budget</u>	<u>Production Impact Numbers</u>
FY05	\$386,855	\$11,000,000
FY06	\$389,052	\$18,920,000
FY07	\$465,502	\$17,400,000
FY08	\$498,895	\$20,800,000
FY09	\$542,000	\$25,650,000
FY10	\$534,600	\$43,000,000



## State-by-State Staff Comparisons

- **Oklahoma**
  - Office Type: Statewide, Film and Music
  - Staff: Statewide, 5
- **Texas**
  - Office Type: Statewide, Film Only  
Regional, 9
  - Staff: Statewide, 12  
Regional, 16
  - Office Type: Statewide, Music Only  
Regional, 1
  - Staff: Statewide, 3  
Regional, 1
- **New York**
  - Office Type: Statewide, Film Only  
Regional, 5
  - Staff: Statewide, 7  
Regional, 6
- **Michigan**
  - Office Type: Statewide, Film Only  
Regional, 3
  - Staff: Statewide, 7  
Regional, 7
- **Georgia**
  - Office Type: Statewide, Film and Music  
Regional, 1, Film Only
  - Staff: Statewide, 7  
Regional, 2
- **Illinois**
  - Office Type: Statewide, Film Only  
Regional, 2
  - Staff: Statewide, 1  
Regional, 4
  - Office Type: Regional, Music Only
  - Staff: Regional, 1
- **New Mexico**
  - Office Type: Statewide, Film Only  
Regional, 6
  - Staff: Statewide, 10  
Regional, 7
  - Office Type: Statewide, Music Only  
Regional, 1
  - Staff: Statewide, 1  
Regional, 1
- **Louisiana**
  - Office Type: Statewide, Film and Music  
Regional, 7, Film Only
  - Staff: Statewide, 11  
Regional, 9
  - Office Type: Regional, Music Only
  - Staff: Regional, 1

## What's Still Needed?

Continuing Support of State Leadership



## Net Win for Oklahoma

**Q:** Why Film vs. Health Care or Education?

**A:** Film is an industry and a revenue generator

**Q:** Jobs Creation in a tough economy?

**A:** Films will continue to be made; these are jobs we can bring to Oklahoma while building infrastructure for a sustainable new industry. Jobs creation translates to new wealth, tax revenue and spending

***The Film Industry = An ROI that continues to grow as more companies set up shop and production grows***

## Net Win for Oklahoma

### Creating an Industry and Diversifying Oklahoma's Economy

- Film and television production is an equal-opportunity economic developer with just as much interest in smaller or rural communities as urban centers
- Its newly created quality jobs help retain Oklahoma's young creative class
- These jobs help attract expatriate talent back to the state
- Production is an environmentally friendly industry; department heads adhere to specific environmental standards
- Increases tourism by attracting visitors to filming sites in the state

### Awareness

- The film and television industries enhance and modernize the perception of our state
- Those industries foster awareness of our state's beauty and culture
- Celebrities in Oklahoma create earned media opportunities





OklahomaFilm.org -- 800.766.FILM